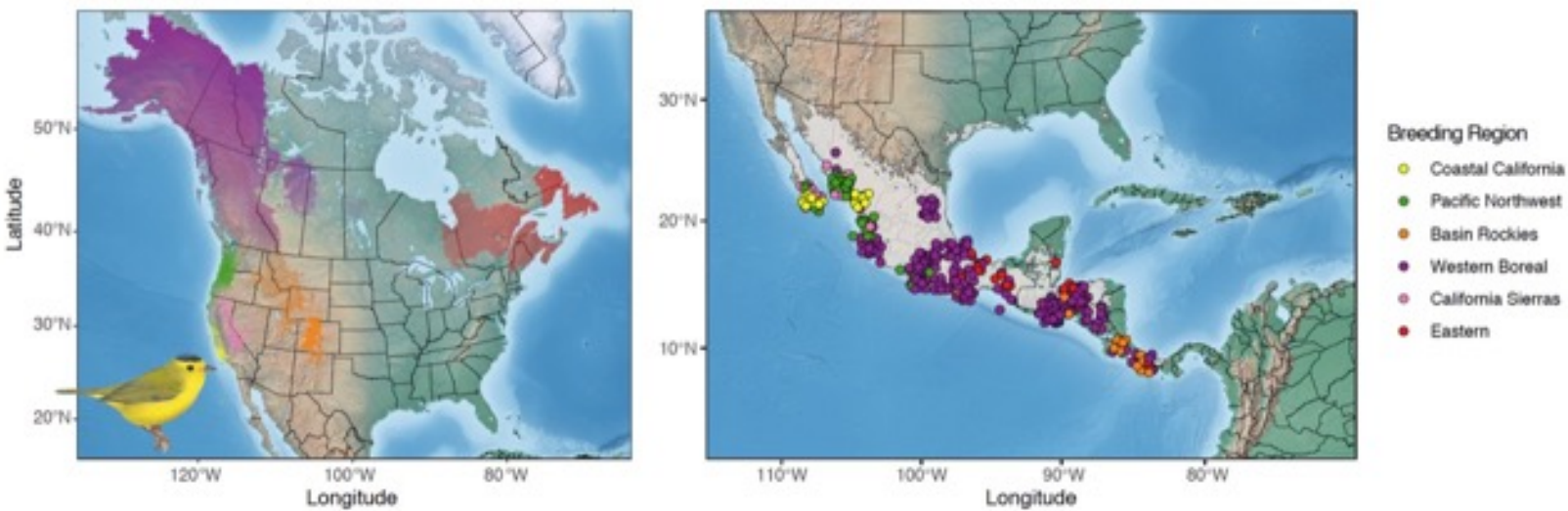


# APM 533 - Fall 2023

## Mathematical Population Biology

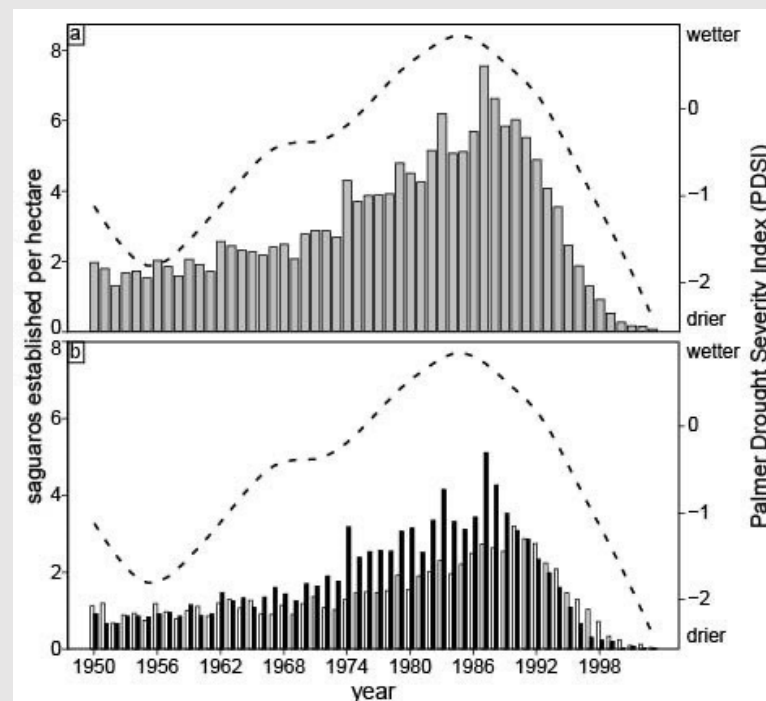
Learn how to analyze complex ecological data sets using Bayesian methods and integrated population models.

Wilson's Warbler



Ruegg et al. (2019)

- Lecture: TTh 1:30 – 2:45 pm
- Instructor: Jay Taylor
- For more information, contact [jetaylo6@asu.edu](mailto:jetaylo6@asu.edu)



Winkler et al. (2013)