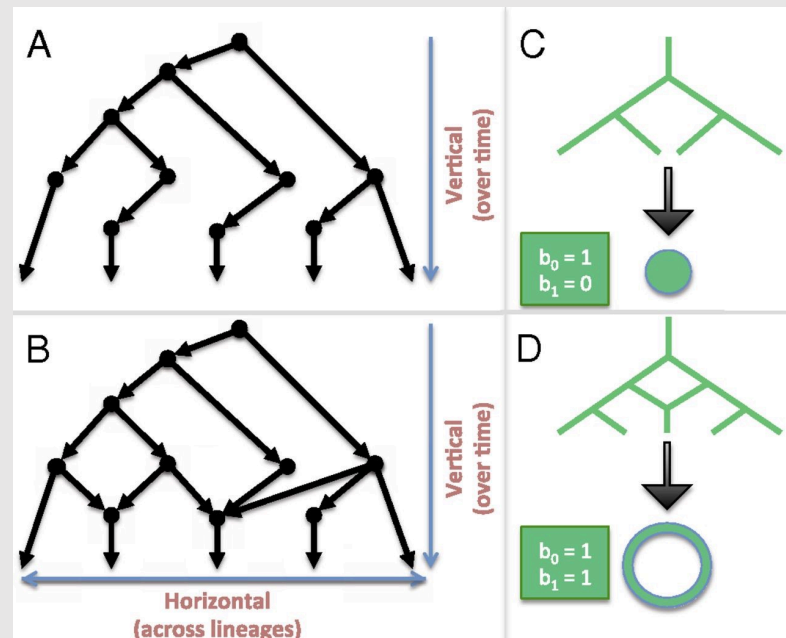
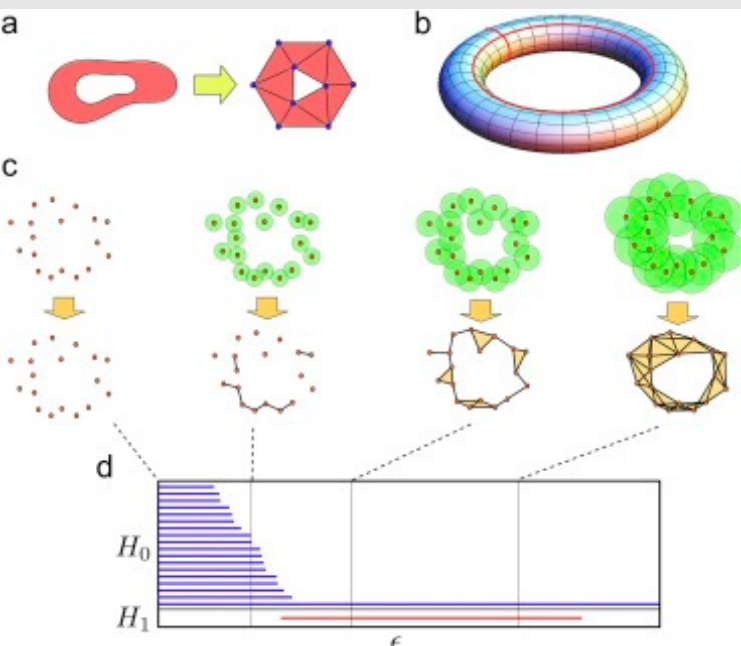


# APM 598 - SPRING 2022

## Topological Data Analysis for Ecology and Evolutionary Biology

Learn how topological methods can be used to analyze ecological and genetic data sets and then apply these to your own data.



Camara (2017)

Chan et al. (2013)

- Lecture: MW 3 – 4:15 pm
- 3 credits (class # 31210)
- Instructor: Jay Taylor
- For more information, contact [jetaylo6@asu.edu](mailto:jetaylo6@asu.edu)

